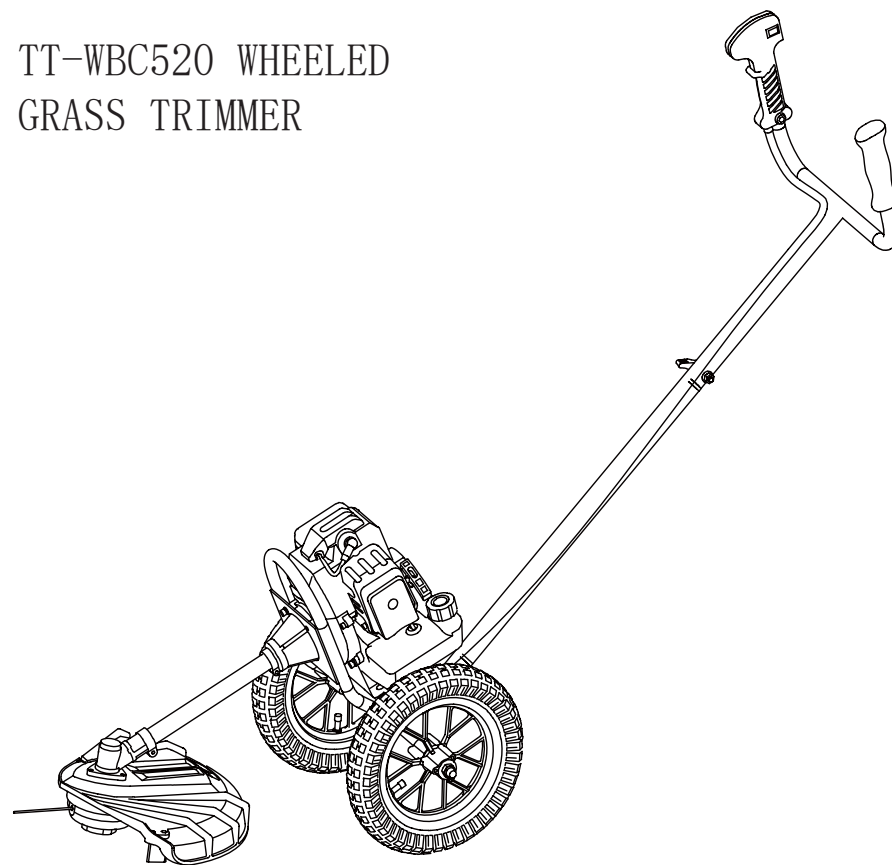


CONTACT

OPERATOR' S MANUAL

TT-WBC520 WHEELED GRASS TRIMMER



IMPORTANT! IT IS ESSENTIAL THAT YOU READ THE INSTRUCTIONS IN THIS MANUAL BEFORE ASSEMBLING, OPERATING AND MAINTAINING THIS MACHINE.

Sherpa Tools Ltd.
STWT52 WHEELED TRIMMER

If you experience any problems with this product,
please do not return to the store. Contact Sherpa
Tools direct on our UK helpline.

UK Helpline: 01522 283 020
www.sherpatools.co.uk

TROUBLESHOOTING

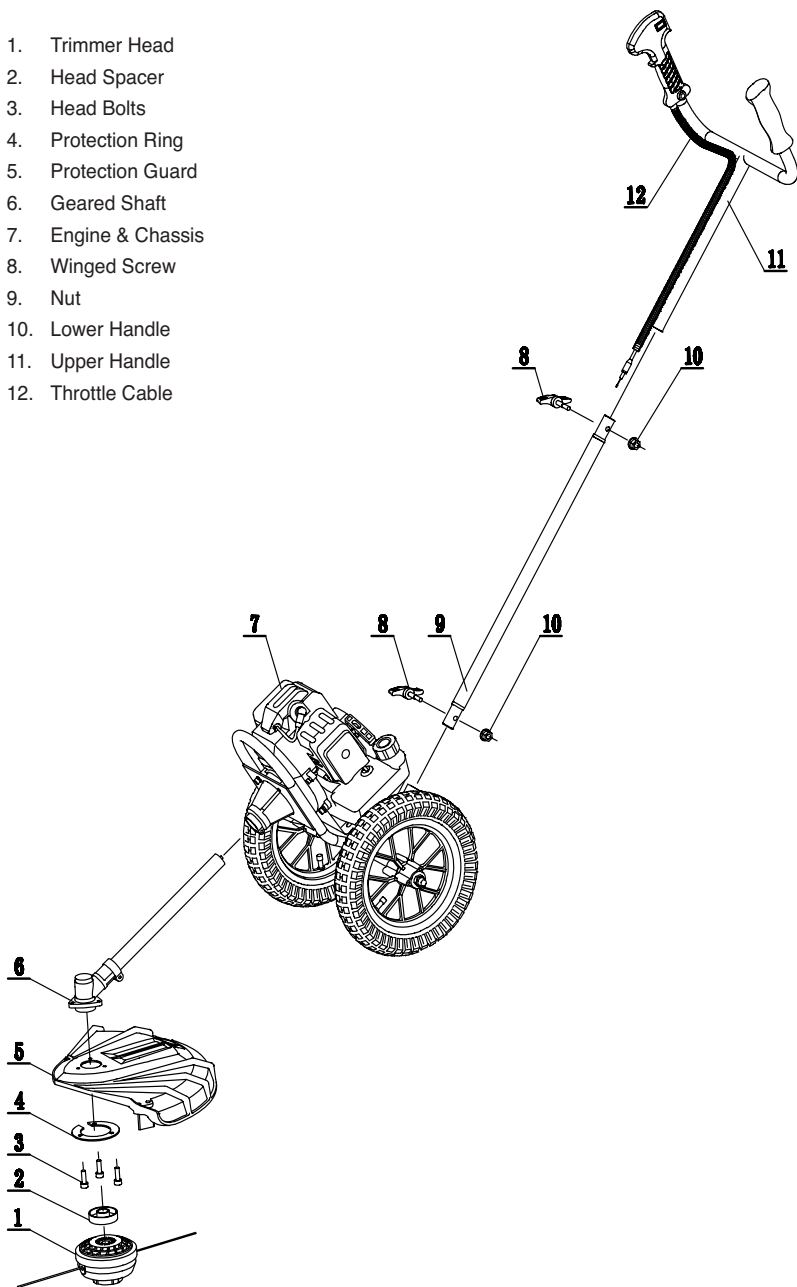
PROBLEM	CAUSE	CORRECTION
Will not start	1. Out of fuel	1. Fill fuel tank
	2. Engine not choked properly	2. See TO START ENGINE instructions
	3.Engine flooded	3. Wait several minutes before trying again
	4. Dirty air filter	4. Clean or replace air filter
	5. Water in fuel	5. Drain fuel tank and carburettor, fill with fresh fuel
	6. Clogged fuel tank/line	6. Remove fuel tank or filter and clean
	7. Loose spark plug wire	7. Make sure plug wire is seated properly on plug
	8. Bad spark plug or improper gap	8. Replace spark plug or adjust gap
	9. Carburettor out of adjustment	9. Make necessary adjustments
Hard to start	1. Throttle control not set properly	1. Place throttle control in FAST position
	2. Dirty air filter	2. Clean or replace air filter
	3. Bad spark plug or improper gap	3. Replace spark plug or adjust gap
	4. Stale or dirty fuel	4. Drain fuel tank and carburettor, fill with fresh fuel
	5. Loose spark plug wire	5. Make sure plug wire is seated properly on plug
	6. Carburettor out of adjustment	6. Make necessary adjustments
Loss of power	1. Engine is overloaded	1. Clean or replace air filter
	2. Dirty air filter	2. Clean or replace air filter
	3. Bad spark plug	3. Replace spark plug

ENGINE SPECIFICATION

Specification: TT-BC520 Model No.: TT-BC520
Engine type: Single cylinder, air-forced cool, 2-stroke
Engine model: 1E44F-5
Displacement: 51.7cc
Rated output power: 1.4kw/7500rpm
Carburetor: Diaphragm type
Ignition: CDI
Fuel tank capacity: 1200ml
Handle Pipe diameter: 25mm
Working pipe diameter:26mm
8MM+9 Alloy transmission shaft
Cutting head: Nylon cutter

TRIMMER PARTS DIAGRAM

1. Trimmer Head
2. Head Spacer
3. Head Bolts
4. Protection Ring
5. Protection Guard
6. Geared Shaft
7. Engine & Chassis
8. Winged Screw
9. Nut
10. Lower Handle
11. Upper Handle
12. Throttle Cable



SAFETY INFORMATION



SAFETY FIRST

Instructions contained in warnings within this manual marked with a symbol concern critical points which must be taken into consideration to prevent possible serious bodily injury, and for this reason you are requested to read all such instructions carefully and follow them without fail.

WARNINGS IN THE MANUAL



WARNING

This mark indicates instructions which must be followed in order to prevent accidents which could lead to serious bodily injury or death.



IMPORTANT

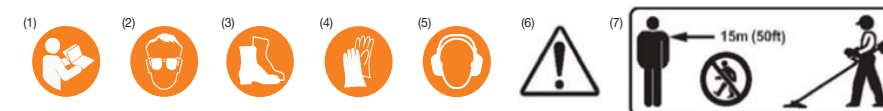
This mark indicates instructions which must be followed, or it leads to mechanical failure, breakdown, or damage.



NOTE

This mark indicates hints or directions useful in the use of the product.

Warning Labels



- (1) Read owner's manual before operating machine.
- (2) Wear head, eye and ear protection.
- (3) Wear foot protection.
- (4) Wear gloves.

- (5) Beware of thrown objects.
- (6) Warning / Attention
- (7) Keep all children, bystanders and helpers 15 metres away from the brush cutter

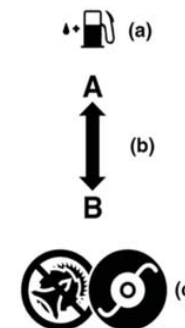
Symbols on the machine

For safe operation and maintenance, symbols are carved in relief on the machine. Please pay attention to all instructions, symbols and labels to ensure safe use.

- (a) The port to refuel the "MIXED PETROL"
- Position: FUEL TANK CAP

- (b) The direction A to close the choke
The direction B to open the choke
Position: AIR CLEANER COVER

- (c) This unit is fitted with only flexible line cutter. Never use cutting blade made of metal or plastic. Position: DEBRIS GUARD



SAFE OPERATION

1. Read this manual carefully until you completely understand and follow all safety and operating instructions.

2. Keep this manual handy so that you may refer to it later whenever any questions arise. Also note, if you have any questions which cannot be answered herein, contact Sherpa Tools.

3. Always be sure to include this manual when selling, lending, or otherwise transferring the ownership of this product.

4. Never allow children or anyone unable to fully understand the directions given in the manual to use the machine.

WORKING CONDITION

1. When using the product, you should wear proper clothing and protective equipment:

- (1) Helmet
- (2) Ear protectors
- (3) Protection goggles or face protector
- (4) Thick work gloves
- (5) Non-slip-sole work boots

2. And you should carry with you:

- (1) Attached tools and files
- (2) Properly stored fuel
- (3) Spare trimmer line

(4) Things to notify your working area (rope, warning signs)

(5) Whistle (for collaboration or emergency)

(6) Hatchet or saw (for removal of obstacles)

3. Do not wear loose clothing, jewellery, short trousers, sandals, or go barefoot. Do not wear anything which might be caught by a moving part of the unit. Secure hair so it is above shoulder length.

WORKING CIRCUMSTANCE

1. Never start the engine inside a closed room or building. Exhaust gases contain dangerous carbon monoxide.

2. Never use the product,

- a. when the ground is slippery or when you can't maintain a steady posture.
- b. At night, at times of heavy fog, or at any other times when your field of vision might be limited and it would be difficult to gain a clear view of the working area.
- c. During rain storms, during lightning storms, at times of strong or gale-force winds, or at any other times when weather conditions might make it unsafe to use the product.

WORKING PLAN

1. You should never use the product when under the

influence of alcohol, when suffering from exhaustion or lack of sleep, when suffering from drowsiness as a result of having taken cold medicine or at any other time when a possibility exists that your judgment might be impaired or that you might not be able to operate the product properly and in a safe manner.

2. When planning your work schedule, allow plenty of time to rest. Limit the amount of time over which the product is to be used continuously to somewhere around 30~40 minutes per session, and take 10~20 minutes of rest between work sessions. Also try to keep the total amount of work performed in a single day under 2 hours or less.

WARNING

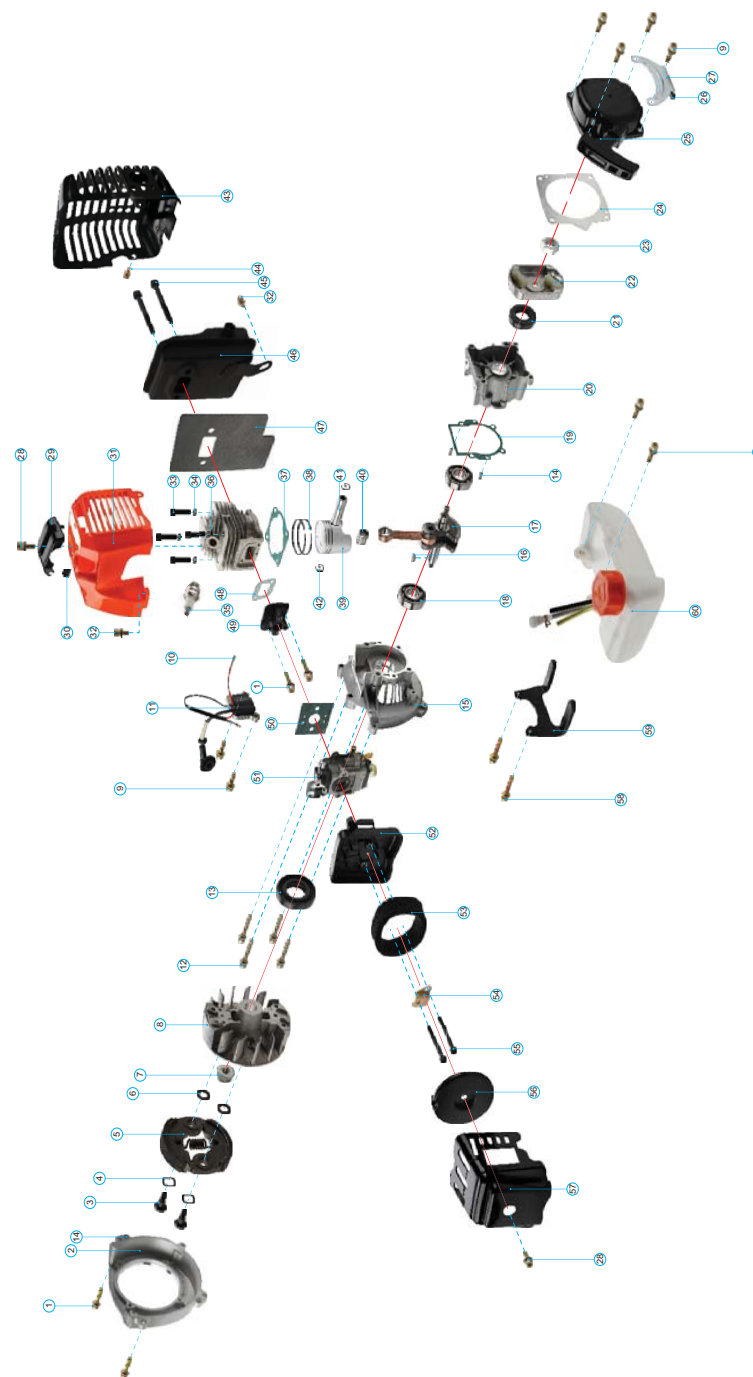
1. If you don't observe the working time, or working manner, Repetitive Stress Injury (RSI) could occur. If you feel discomfort, redness and swelling of your fingers or any other part of your body, see a doctor before getting worse.

2. To avoid noise complaints, in general, operate product between 8am and 5pm on weekdays and 9am to 5pm weekends.

NOTE

Check and follow the local regulations as to sound level and hours of operations for the product.

ENGINE PARTS DIAGRAM



❗ IMPORTANT

Note that using any spark plugs other than those designated may result in the engine failing to operate properly or in the engine becoming overheated and damaged.

To install the spark plug, first turn the plug until it is finger tight, then tighten it a quarter turn more with a socket wrench.

TIGHTENING TORQUE:
9.8~11.8 N.m

MUFFLER

⚠ WARNING

Inspect periodically, the muffler for loose fasteners, any damage or corrosion. If any sign of exhaust leakage is found, do not use the brush cutter and have it repaired immediately.

Note that failing to do so may result in the engine catching on fire.

INTAKE AIR COOLING VENT

⚠ WARNING

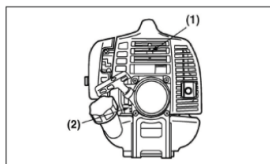
Never touch the cylinder, muffler, or spark plugs with your bare hands immediately after stopping the engine. The engine can become very hot when in operation, and doing so could result in severe burns. When checking the trimmer to make sure that it is okay before using it, check the area around the muffler and remove any wood chips or leaves which have attached themselves to the brush cutter. Note that failing to do so could cause the muffler to become overheated, and that this in turn could cause the brush cutter to catch on fire. Always make sure that the muffler is clean and free of wood chips, leaves, and other waste before use.

- Check the intake air cooling vent and the area around the cylinder cooling fins after every 25 hours of use for blockage, and remove any waste which has attached itself to the brush cutter. Note that it is necessary to remove the plug guard shown in Figure in order to be able to view the upper part of the cylinder.

❗ IMPORTANT

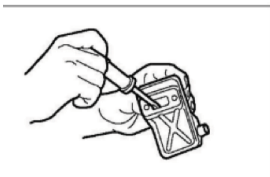
If waste gets stuck and causes blockage around the intake air cooling vent or between the cylinder fins, it may cause the engine to overheat, and that in turn may cause mechanical failure on the part of the brush cutter. (MA6)

- (1) Cylinder fin
- (2) Intake air cooling vent (back)



PROCEDURES TO BE PERFORMED AFTER EVERY 10 HOURS OF USE

1. Remove the muffler, insert a screwdriver into the vent, and wipe away any carbon build up. Wipe away any carbon buildup on the muffler exhaust vent at the same time.



- 2. Tighten all screws, bolts, and fittings.
- 3. Check to see if any oil or

grease has worked its way in between the clutch lining and drum, and if it has wiped it away using oil-free, lead-free gasoline.

BEFORE STARTING THE ENGINE

1. The area within a perimeter of 50 feet (15m) of the person using the product should be considered a hazardous area into which no one should enter. If necessary, yellow warning rope, warning signs should be placed around the perimeter of the area. When work is to be performed simultaneously by two or more persons, care should also be taken to constantly look around or otherwise check for the presence and locations of other people working so as to maintain a distance between each person sufficient to ensure safety.

2. Check the condition of working area to avoid any accident by hitting hidden obstacles such as stumps, stones, cans, or broken grass.

❗ IMPORTANT

Remove any obstacle before beginning work.

3. Inspect the entire unit for loose fasteners and fuel leakage. Make sure that the cutting attachment is properly installed and securely fastened.

4. Be sure the debris guard is firmly attached in place.

STARTING THE ENGINE

1. Keep bystanders and animals at least 50feet (15m) away from the operating point. If you are approached, immediately stop the engine.

2. The product is equipped with a centrifugal clutch mechanism, so the cutting attachment begins to rotate as soon as the engine is started by putting the throttle into the start position. When starting the engine, place the product onto the ground in a flat clear area and hold it firmly in place so as to ensure that neither the cutting part nor the throttle come into contact with any obstacle when the engine starts.

⚠ WARNING

Never place the throttle into the high speed position when starting the engine.

3. After starting the engine, check to make sure that the cutting attachment stops rotating when the throttle is moved fully back to its original position. If it continues to rotate even after the throttle has been moved fully back, turn off the engine and take the unit to your authorized servicing dealer for repair.

USING THE PRODUCT

❗ IMPORTANT

Cut only materials recommended by the manufacturer. And use only for tasks this machine is intended for.

1. Grip the handles firmly with both hands using your whole hand. Place your feet slightly apart (slightly further apart than

the width of your shoulders) so that your weight is distributed evenly across both legs, and always be sure to maintain a steady, even posture while working.

2. Keep cutting attachment below waist level.

3. Maintain the speed of the engine at the level required to perform cutting work, and never raise the speed of the engine above the level necessary.

4. If the unit start to shake or vibrate, turn off the engine and check the whole unit. Do not use it until the trouble has been properly corrected.

5. Keep all parts of your body away from rotating cutting attachment and hot surfaces.

6. Never touch the muffler, spark plug, or other metallic parts of the engine while the engine is in operation or immediately after shutting down the engine. Doing so could result in serious burns or electrical shock.

IF SOMEONE COMES

1. Guard against hazardous situations at all times. Warn adults to keep pets and children away from the area. Be careful if you are approached. Injury may result from flying debris.

2. If someone calls out or otherwise interrupts you while working, always be sure to turn off the engine before turning around.

MAINTENANCE

1. In order to maintain your product in proper working order, perform the maintenance and checking operations described in the manual at regular intervals.

2. Always be sure to turn off the engine before performing any maintenance or checking procedures.

⚠ WARNING

The metallic parts reach high temperatures immediately after stopping the engine.

3. Under no circumstances should you ever take apart the product or alter it in any way. Doing so might result in the product becoming damaged during operation or the product becoming unable to operate properly.

HANDLING FUEL

1. The engine of the product is designed to run on a mixed fuel which contains highly flammable petrol. Never store cans of fuel or refill the tank of the unit in any place where there is a boiler, stove, wood fire, electrical sparks, welding sparks, or any other source of heat or fire which might ignite the fuel.

2. Never smoke while operating the unit or refilling its fuel tank.

3. When refilling the tank, always turn off the engine and allow it to cool down. Take a careful look around to make sure that there are no sparks or open flames anywhere nearby before refuelling.

4. Wipe spilled fuel completely using a dry rag if any fuel spillage occurs during

refuelling.

5. After refuelling, screw the fuel cap back tightly onto the fuel tank and then carry the unit to a spot 10feet (3m) or more away from where it was refuelled before turning on the engine.

TRANSPORTATION

1. When hand-carrying the product, cover over the cutting part if necessary, lift up the product and carry it paying attention to the blade.

2. Never transport the product over rough roads over long distances by vehicle without removing all fuel from the fuel tank. If doing so, fuel might leak from the tank during transport.

MAINTENANCE

Maintenance, replacement, or repair of the emission control device and systems may be performed by any non-road engine repair establishment or individual.

⚠ WARNING

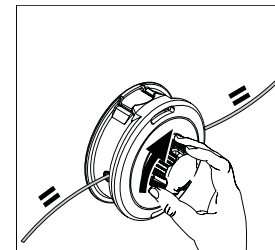
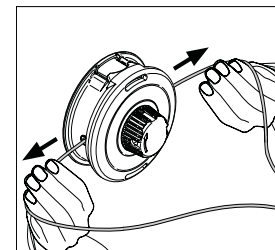
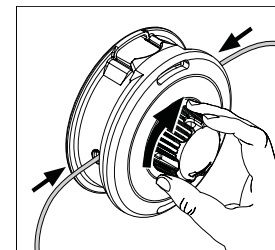
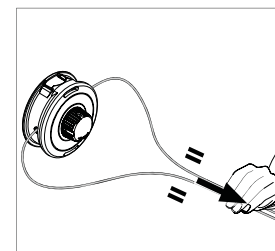
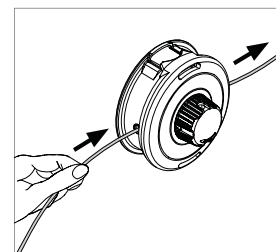
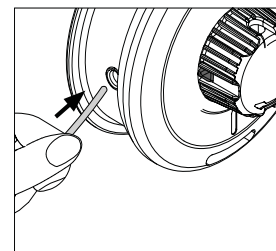
- Always be sure to stop the engine before inspecting the brush cutter for problems or performing maintenance.
- Never alter the brush cutter or take the engine apart.
- Things to check before using brush cutter.

REFILLING TRIMMING LINE

For replacement line, use a diameter of 3.0mm. The spool is capable for a line up to 4m on the head. Avoid using a larger line as it may cut down the trimming performance.

⚠ WARNING

For safety reasons, do not use metal reinforced line.



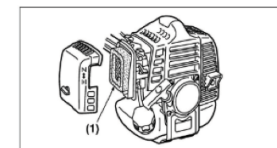
NOTE

We recommend using Oregon Duoline 3.00mm (part no. 106502E)

AIR FILTER

The air filter, if clogged, will reduce the engine performance. Monthly check and clean the filter element in warm, soapy water as required. Dry completely before installing. If the element is broken or shrunk, replace with a new one.

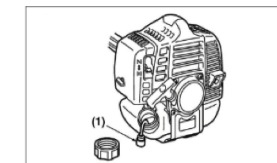
(1) Air filter



FUEL FILTER

When the engine runs short of fuel supply, check the fuel cap and the fuel filter for blockage.

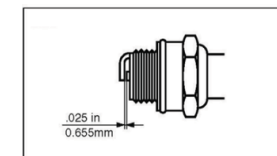
(1) Fuel filter



SPARK PLUG

Starting failure and mis-firing are often caused by a fouled spark plug. Periodically clean the spark plug and check that the spark gap is in the correct range.

When you take off the spark plug, twist and pull off the cap.



LINE HEAD USAGE

⚠ WARNING

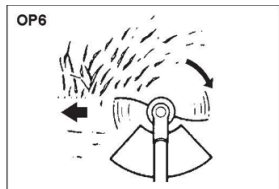
1. Always wear eye protection such as safety goggles. Never lean over the rotating cutting head. Rocks or other debris could be thrown into eyes and face and cause serious personal injury.

2. Keep the debris guard attached in place at all times when the unit is operated.

TRIMMING GRASS AND WEEDS

• Always remember that the TIP of the line does cutting. You will achieve better results by not crowding the line into the cutting area. Allow the unit to trim at its own pace.

1. Hold the unit so the head is off the ground and is tilted about 20 degrees toward the sweep direction. (OP6)



2. You can avoid thrown debris by sweeping from your right to the left.

3. Use a slow, deliberate action to cut heavy growth. The rate of cutting motion will depend on the material being cut. Heavy growth will require slower action than will light growth.

4. Never swing the unit so hard as you are in danger of losing

your balance or control of the unit.

5. Try to control the cutting motion with the hip rather than placing the full workload on the arm and hands.

6. Take precautions to avoid wire, grass and dead, dry, long-stem weeds from wrapping around the head shaft. Such materials can stall the head and cause the clutch to slip, resulting in damage to the clutch system if repeated frequently.

ADJUSTING THE LINE LENGTH

• Your brush cutters is equipped with a bump feed type nylon line head that allows the operator to advance the line without stopping the engine. When the line becomes short, lightly tap the head on the ground while running the engine at full throttle.

• Each time the head is bumped, the line advance about 1 inch (25.4 mm). For better effect, tap the head on bear ground or hard soil. Avoid bumping in thick, tall grass as the engine may stall by overload.

⚠ WARNING

• The rotating parts fastened incorrectly may cause serious accident to the operator.

• Make sure that the head is not bent, warped, cracked, broken or damaged.

• If you find any error to the head, discard it and change new one.

• By using the harness, hang

the unit on your right side. Adjust the harness length so that the cutting head may become parallel to the ground.

⚠ WARNING

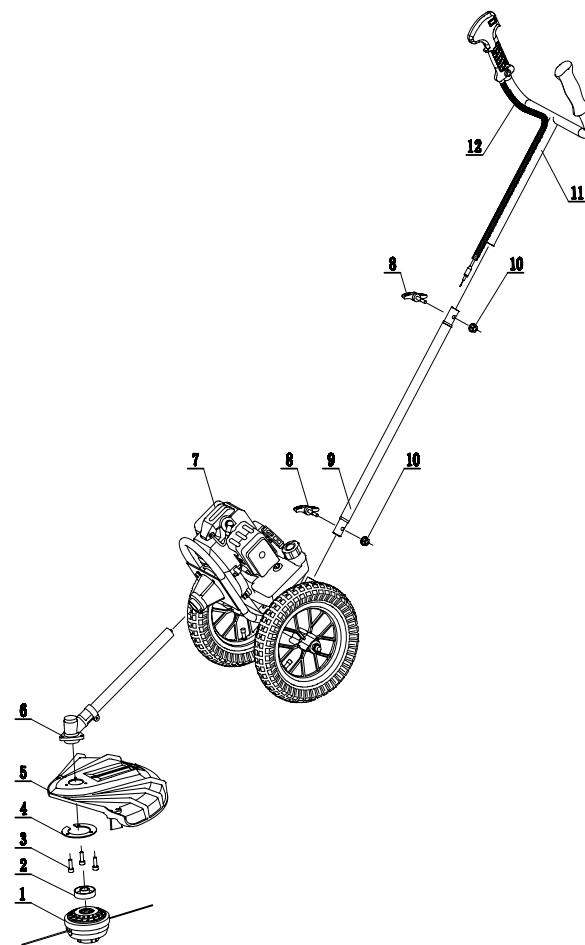
• Make sure to use harness and cutting attachment guard. If not, it is very dangerous when you slip or lose your balance.

⚠ WARNING

• If the grass or other object gets caught in the head, or if the unit starts to shake or vibrate, turn off the engine and check the head.

• Turn off the engine and make sure the head has completely stopped before checking the blade, and removing any object got caught in.

ASSEMBLY



2. INSTALLING SHAFT

Line shaft (6) up with entry point at bottom of engine (7). Insert and push firmly into place. Ensure the bottom end of the shaft is pointing straight down in preparation of attaching protection shield and cutting head. Push the upper of the two bolts through shaft and tighten. Then tighten the lower bolt to clamp around the shaft.

3. INSTALLING PROTECTION SHIELD

Align the protection guard (5) with the head of the shaft (6). Attach the protection guard (5) and ring (4) with the three bolts supplied (3).

4. INSTALLING CUTTING HEAD

Push spacer (2) onto shaft underneath protection guard (5).

While locking the gear shaft by inserting the hexagon bar into the upper holder and the housing, rotate the cutting head to engage threads. Hand tighten it securely.

4. INSTALLING TRIMMER LINE

See diagram below.

1. INSTALLING HANDLE

Insert the lower handle (9) into the mounting cup at the bottom of the drive unit (7). Align holes and thread handle screw (8) through the handle and tighten nut (10). Insert upper handle (11) into top of lower handle (9). Align holes and thread handle screw (8) through the handle and tighten nut (10).

Remove side cover from engine unit (7) using hex key. Pass throttle wiring under engine and fuel tank and then up in front of engine. Insert throttle cable into place and tighten screw to secure. Push both pairs of electric connectors together to secure. Ensure the wires are connected with the matching colour wire from the engine.

FUEL

⚠ WARNING

• Petrol is very flammable. Avoid smoking or bringing any flame or sparks near fuel.

• Wipe up all spills before starting the engine.

• Make sure to stop the engine and allow it cool before refuelling the unit.

• Keep open flames away from the area where fuel is handled or stored.

❗ IMPORTANT

• Never use oil for 4 cycle engine use or water cooled 2-cycle engine.

• Never use "FUEL WITH NO OIL (NEAT UNLEADED PETROL)".

• Never use fuel laced with water.

• Mixed fuels which have been left unused for a period of one month or more may clog the carburetor or result in the engine failing to operate properly. Put remained fuel into an air-tight container and keep it in the dark and cool room.

• Please ask for "mixed gasoline for air-cooled 2-cycle engines" at your nearest gas station, or use fuel made by putting unleaded gasoline for automobiles and air-cooled 2-cycle engine oil into a mixing container in accordance with the following ratios and then shaking to mix well.

Mixing ratios:

When using commercially available 2 stroke oil: 40:1

OIL

It is recommended that you use a high quality 2 stroke oil in this machine with an ethanol shield.

Sherpa recommends use of B3C oil in the wheeled trimmer, when using this product you are able to mix petrol to oil at a 50:1 ratio, as opposed to the usual 40:1 with other 2 stroke oils.

Ethanol Shield 2 Stroke Oil reduces engine temperature (CCT), protects against specific forms of corrosion, reduces exhaust smoke output and extends engine life. This oil will stabilise fuel for up to a year.

100ml - B3C2ST1S
1l - B3C2STLRT

STORAGE

Aged fuel is one of major causes of engine starting failure. Before storing the unit, empty the fuel tank and run the engine until it uses all the fuel left in the fuel line and the carburetor. Store the unit indoors taking necessary measures for rust prevention.

OPERATION

STARTING ENGINE

⚠ WARNING

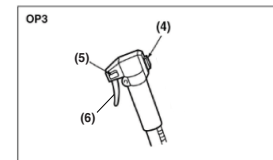
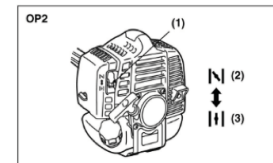
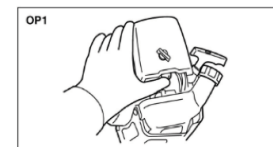
The cutting head will start rotating upon the engine starts.

1. Rest the unit on a flat, firm place. Keep the cutting head off the ground and clear of surrounding objects as it will start rotating upon starting of the engine.

2. Ensure the choke lever to the closed position (down). (OP2)

(1) Choke lever
(2) Closed position
(3) Open position

3. Set the ignition switch to the "start" position.



4. Push the primer bulb pump five or six times. (OP1)

5. While pulling the throttle trigger all the way in, push the throttle lock button, and release the throttle, then the throttle lever is in the "Start position". (OP3)

(4) Ignition switch
(5) Throttle lock button
(6) Throttle trigger

6. Move the choke lever to the open position (up) (OP2).

7. Pull out the starter rope quickly to start engine. (OP4)

❗ IMPORTANT

Avoid pulling the rope to its end or returning it by releasing the knob. Such actions can cause starter failures.

8. Close choke by moving lever (1) to closed position (down).

9. Run engine for a 10-20 seconds before releasing throttle lock button by gently pulling on throttle trigger and releasing again.

10. Allow the engine to warm up for several minutes before starting operation.

📖 NOTE

1. When restarting the engine immediately after stopping it, leave the choke open (OP2) and push the primer pump several times (OP4).

2. Overchoking can make the engine hard to start due to excess fuel. If the engine failed to start after several attempts,

open the choke and repeat pulling the rope, or remove the spark plug and dry it.

STOPPING ENGINE

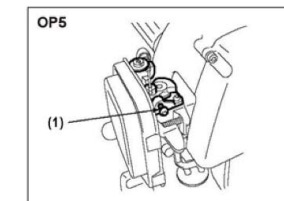
1. Release the throttle lever and run the engine for a half minute.

2. Shift the ignition switch to the STOP position.

📖 NOTE

Except for an emergency, avoid stopping the engine while pulling the throttle lever.

ADJUSTING IDLING SPEED (OP5)



1. If the engine tends stop frequently at idling mode, turn the adjusting screw clockwise a fraction.

2. When the cutting head keeps rotating after releasing the trigger, turn the adjusting screw anticlockwise.

📖 NOTE

Warm up the engine before adjusting the idling speed.